

**Providing life saving and life changing
interventions and specialist support for victims
and survivors of sexual violence and abuse.**



Our Approach



Inclusive

Our specialist services are available for **people of all genders** but we recognise that sexual violence disproportionately affects women and girls.



Feminist perspective

We recognise that sexual violence is a **gender based crime** which is both a cause and consequence of **gender inequality**.



Safe space

In order to heal and work through their trauma we provide a **women only safe space** for those that need it.

Mission:

To improve the lives of people in Coventry who have been impacted by rape and sexual abuse, enabling them to survive and thrive in life.



This year's achievements



In numbers

1266 people accessed our specialist interventions.
655 referred from external services.



Innovative service delivery

Designed and implemented a **new therapeutic services** model.



Informing policy with research

Collaborated with local universities on **mental health needs assessment** for sexual violence survivors.



Fostering community support

Established and delivered a vital **peer support group** to improve shared healing.



Acknowledged for our dedication

Highly commended for our commitment to the community at regional awards.



Measuring what matters

New evaluation tool to demonstrate the **tangible outcomes** of our work.



Community safety

Contributed to the West Midlands Police and the **police and crime commissioner** strategy and plans.



A network of support for women

Continued development of the **Coventry Women's Partnership** with other organisations across the city.



Therapeutic Services

374

Referrals into counselling with 301 people attending 3050 counselling sessions.

367

People **waiting for counselling** at the start of the year. This had decreased to **167** at the end of the year.*

188

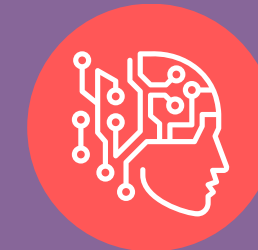
People engaged in **specialist pre-therapy interventions** through a range of 1-1 and group sessions. A total of 36 groups were delivered.



**Counselling waiting list was closed to people aged 13 and over for nine months between 1st February and 27th October 2024 due to lack of funding. Eligibility also changed to Coventry residents only from October.*



New **telephone assessment process** and welcome sessions ensure we can support as many people as possible.



Majority of attendees at sessions sign up to **Thrive**, a six week psychoeducational and wellbeing programme (launched May 2025).

“

The session felt very welcoming and kind. I was almost certain I did not want to try group sessions but now I'm willing to give them a go. Your passion really came across and I feel like I will receive great support from you.

”



Crisis and Advocacy



Actively engaged with West Midlands Police and the Office of the Police and Crime Commissioner supporting the implementation of **Operation Soteria** as part of the Government's End to End Rape Review.

“

If I didn't have my ISVA while going through the justice system I would have withdrawn my case. I honestly don't think I would have still been alive today. My ISVA helped me more than she could ever understand.

”

405

Referrals

into the ISVA service

631

Clients

supported by the team

63

Caseload

average per team member

87%

Engaged

with the criminal justice system



Training



Six training sessions delivered to 58 people on vicarious trauma and sexual violence awareness.



New twice yearly sexual violence awareness training in place (online and in person model).

It was informative, insightful and easy to follow.

This is one of the best CSE courses I have attended, it updated my knowledge and understanding

The content was pitched at the right level and exactly what we needed.

Training benefits



Supports professional CPD hours.



BACP accredited centre.



Developed in line with current legislation and regularly updated to reflect changes in legislation, guidance and best practice.



Interactive activities and reflective tasks to help understanding and confidence.



Our commitment to public benefit



Empowering Survivors: We provide comprehensive support and advocacy to all victims and survivors of sexual violence and abuse, ensuring they have a voice and access to the help they need.



Inclusive Support: We recognise that survivors often face a range of challenges, including physical, learning, and emotional wellbeing difficulties. Our services are designed to be responsive to these diverse needs.



Prevention and Awareness: Through our vital outreach programmes, we actively promote prevention strategies and raise public awareness about sexual violence and abuse.



Expert Training: We deliver specialist training to other organisations, sharing our expertise on issues related to rape and sexual abuse to foster a more informed and supportive community.



Collaborative Research: We actively contribute to the research efforts of other organisations, helping to advance understanding and improve responses to sexual violence.



Advocacy and partnership: We work closely with partners and passionately campaign to ensure the voices of survivors are heard and respected, influencing positive change.