

**Specialist interventions for adults and children
impacted directly or indirectly by sexual
violence or abuse at any time in their lives.**



Our Approach



Inclusive

Our specialist services are available for **people of all genders** but we recognise that sexual violence disproportionately affects women and girls.



Feminist perspective

We recognise that sexual violence is a **gender based crime** which is both a cause and consequence of **gender inequality**.




Safe space

In order to heal and work through their trauma we provide a **women only safe space** for those that need it.

Mission:

To improve the lives of people in Coventry who have been impacted by rape and sexual abuse, enabling them to survive and thrive in life.



Between April 2023 and March 2024



In numbers

1739 people accessed our specialist interventions. 22% were children.



Demographic

Over 85% were women, and those aged 18 to 34 the largest age bracket.



Nationally

1 in 4 women, 1 in 6 children and 1 in 18 men have been raped, sexually abused or sexually assaulted.

More than 92% of perpetrators are known to their victims.

What our clients say..



Without the help and support of CRASAC I believe my daughter would have seriously harmed herself or ended her life.

The work CRASAC does is truly life changing.

Such an essential service.

CRASAC has been a lifeline.

This service is exceptional.

If it wasn't for CRASAC I don't know how I'd be able to cope.

I really believe I would be dead if it was not for the service I received from CRASAC.

The support I had has helped me and my family in so many ways.





Therapeutic Services

828

Referrals into counselling with 367 people attending 3691 counselling sessions*.

572

People **waiting for counselling** at the start of the year. This had decreased to **367** at the end of the year.

136

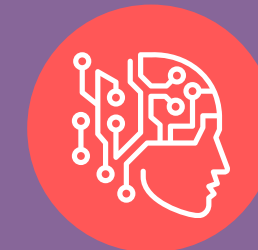
People engaged in **specialist pre-therapy interventions** through a range of 1-1 and group sessions. A total of 39 groups were delivered.

23

People engaged in **post service groups**.



New **triage process** in place means there is no longer a wait for initial assessment for counselling. People are now signposted much earlier to pre-therapy interventions or to external support services as appropriate.



Psychological education packs have been developed and available for all therapists.



Home Office partnership (with RSVP and Black Country Women's Aid) to deliver pre-therapy support interventions across the West Midlands.



*Figures up to end Jan 2024 when the counselling waiting list closed for clients aged over 13 years old.



Crisis and Advocacy



Leading the 'Care & Support' strand of the PCC led Sexual Assault and Abuse Board's **sexual violence strategy**.



Supporting **Operation Soteria** as part of the Government's End to End Rape Review.

378

Referrals

into the ISVA service

701

Clients

supported by the team

50

Caseload

average per team
member

96%

Engaged

with the criminal
justice system

Training



Nine **training sessions** delivered to 155 people including Dudley Lodge, West Midlands Police, Ofqual and Wyken Primary School.



Developed and delivered new twice yearly **sexual violence awareness training**.

It was informative, insightful and easy to follow.

An excellent training session which was hosted very well and much needed.

The content was pitched at the right level and exactly what we needed.

Training benefits



Supports professional CPD hours.



BACP accredited centre.



Developed in line with current legislation and regularly updated to reflect changes in legislation, guidance and best practice.



Interactive activities and reflective tasks to help understanding and confidence.

External Engagement



£26,208 raised through **external fundraising and supporter activities** which included NFU Mutual donation, Lord Mayor's Charity appeal, one-off grants, individual fundraisers (sky dive, marathons, sport challenges), and university student fundraisers.



60 professionals attended our first open day since 2019.



Campaign against local authority funding cuts resulted in over 100 people joining our **protest** and almost **3000 petition signatures**.



25 pieces of **media coverage** over the year. Specific campaign coverage featured on BBC Midlands Today, local radio stations, The Guardian, Coventry Telegraph and Third Sector Magazine.





Plans for 2024/25

Our strategic priorities remain:



Develop and deliver sufficient high quality **responsive services** capable of meeting need and demand including **prevention and awareness activities**.



Influence policy to address the causes and consequences of gender based sexual violence.



Ensure a high quality and **sustainable** organisation capable of growth.

Key projects:



Develop new **therapeutic services** model.



Support West Midlands Police and Crime Commissioner with **needs assessment**.



Continue to lobby Local Authority and Integrated Care Board for **sustainable funding**.



Implement **RCEW National Service Standards** accreditation.



Develop **anti-racism policy** and embed across the organisation.



Increase **volunteering opportunities**.